



# Barracuda IM Firewall

Powerful, easy to use, and affordable instant messaging management and archiving.

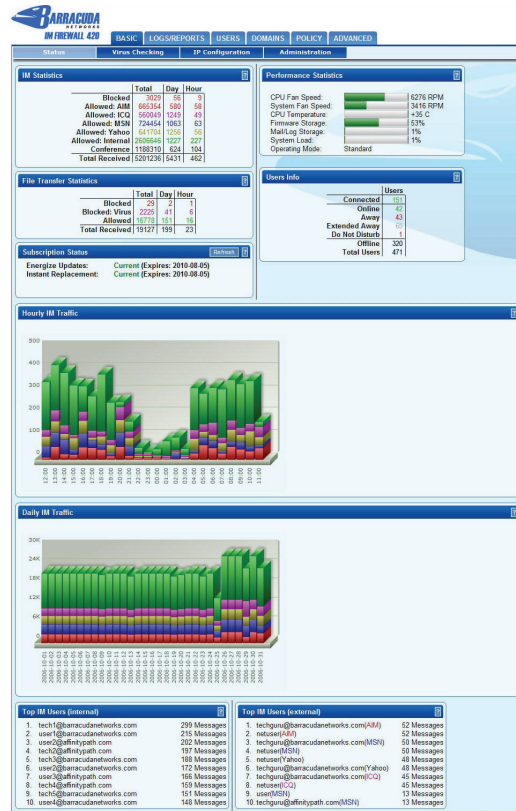
The Barracuda IM Firewall is an integrated hardware and software solution for complete IM management with no per user fees. Taking only minutes to install, the Barracuda IM Firewall provides everything an organization needs to log, secure and manage their IM traffic. It identifies all IM traffic on the network, logging all messages to an internal database and includes policy tools for content filtering, file transfer management, IM access controls and virus protection. With both public IM management capabilities and an internal IM server and client, the Barracuda IM Firewall is the most complete IM solution available.

## Low Maintenance

Installation of the Barracuda IM Firewall is extremely easy, typically taking only five minutes, and will immediately begin logging and managing all IM messages on your network. Energize Updates are automatically retrieved by the Barracuda IM Firewall, enabling maximum IM management and virus protection while eliminating administrative overhead. These updates are provided by Barracuda Central, an advanced technology operations center where engineers continuously monitor the Internet for trends in Internet security threats.

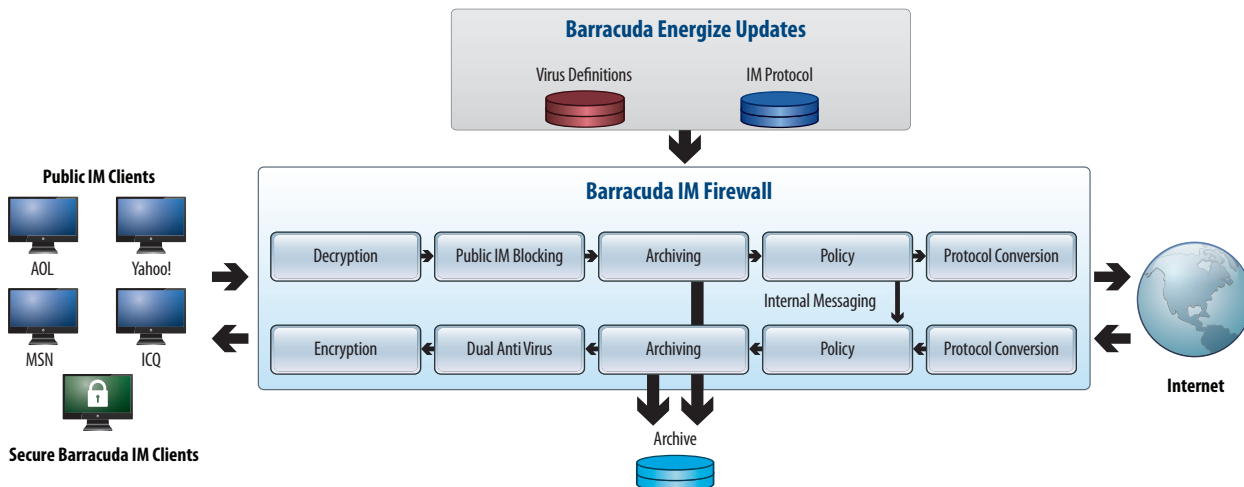
## Versatile

Whether your internal IM plans require managing public IM traffic, or require installing an internal IM server and client, the Barracuda IM Firewall has your IM needs covered. The Barracuda IM Firewall provides tools to manage public IM traffic, as well as an integrated IM server and client to provide a secure internal IM network for your organization.



The Barracuda IM Firewall controls and logs internal and external instant messaging traffic to enforce policies for content filtering, file transfers, IM access controls and virus protection.

## Barracuda IM Firewall Architecture



BARRACUDA IM FIREWALL

MODEL  
220  
320  
420  
620  
820



# BARRACUDA IM FIREWALL

MODEL  
220  
320  
420  
620  
820

## TECHNICAL SPECIFICATIONS

### Security Features

#### COMPREHENSIVE PROTECTION

- IM logging and archiving
- Virus filtering
- IM access controls
- File transfer management
- Keyword notification and content blocking
- Encrypted traffic using IM server/client
- Public IM blocking
- Screen name tracking
- Compliance
- Export IM Conversations to message archiving solutions

#### IM SERVER

- 256bit AES encryption
- Easy client rollout tools
- Contact list management
- Keyword notification
- Content filtering and blocking
- Public IM access using the Barracuda IM client
- LDAP and Active Directory integration
- Message disclaimers

#### VIRUS FILTER

- Dual-layer virus blocking
- Decompression of archives
- File type blocking

### System Features

#### ADMINISTRATORS

- Web-based interface
- User account administration
- Reports, graphs and statistics
- LDAP interface
- Multiple domain support
- Secure remote administration
- IM client deployment tools

#### END USERS

- View personal IM logs
- Familiar IM client

### Hardware Features

#### FRONT PANEL INDICATORS

- Standard VGA
- Activity indicator
- Power indicator

#### FRONT PANEL INDICATORS (cont.)

- Power button
- Reset button

#### CONNECTORS

- Standard VGA
- PS/2 keyboard/mouse
- Ethernet (see chart below)
- Serial port (DB-9)

#### POWER REQUIREMENTS

- AC input voltage 100-240 volts
- Frequency 50/60 Hz

### Support Options

#### ENERGIZE UPDATES SUBSCRIPTION

- Standard technical support
- Hourly IM protocol updates
- Hourly virus definition updates

#### INSTANT REPLACEMENT SERVICE

- Replacement unit shipped next business day
- 24x7 technical support

| MODEL COMPARISON                  | MODEL 220         | MODEL 320         | MODEL 420         | MODEL 620         | MODEL 820         |
|-----------------------------------|-------------------|-------------------|-------------------|-------------------|-------------------|
| <b>CAPACITY*</b>                  |                   |                   |                   |                   |                   |
| Maximum Users                     | 200               | 500               | 1,000             | 3,000             | 7,000             |
| <b>HARDWARE</b>                   |                   |                   |                   |                   |                   |
| Rackmount Chassis                 | 1U Mini           | 1U Mini           | 1U Mini           | 1U Fullsize       | 2U Fullsize       |
| Dimensions (in.)                  | 16.8 x 1.7 x 14   | 16.8 x 1.7 x 14   | 16.8 x 1.7 x 14   | 16.8 x 1.7 x 22.6 | 17.4 x 3.5 x 25.5 |
| Dimensions (cm.)                  | 42.7 x 4.3 x 35.6 | 42.7 x 4.3 x 35.6 | 42.7 x 4.3 x 35.6 | 42.7 x 4.3 x 57.4 | 44.2 x 8.9 x 64.8 |
| Weight (lbs. / kg.)               | 12 / 5.4          | 12 / 5.4          | 12 / 5.4          | 26 / 11.8         | 46 / 20.9         |
| Ethernet                          | 1 x 10/100        | 1 x 10/100        | 1 x 10/100        | 2 x Gigabit       | 2 x Gigabit       |
| Ethernet Passthrough**            | 1 x 10/100        | 1 x 10/100        | 1 x 10/100        | 1 x Gigabit       | 1 x Gigabit       |
| AC Input Current (Amps)           | 1.0               | 1.2               | 1.4               | 1.8               | 3.5               |
| Redundant Disk Array (RAID)       |                   |                   |                   | ✓                 | Hot Swap          |
| Redundant Power Supply            |                   |                   |                   |                   | Hot Swap          |
| ECC Memory                        |                   |                   |                   | ✓                 | ✓                 |
| <b>FEATURES</b>                   |                   |                   |                   |                   |                   |
| Hardened and Secure OS            | ✓                 | ✓                 | ✓                 | ✓                 | ✓                 |
| Capture and Manage Public IM      | ✓                 | ✓                 | ✓                 | ✓                 | ✓                 |
| Internal Secure IM Server/Client  | ✓                 | ✓                 | ✓                 | ✓                 | ✓                 |
| Centralized Policy Management     | ✓                 | ✓                 | ✓                 | ✓                 | ✓                 |
| Keyword Notification              | ✓                 | ✓                 | ✓                 | ✓                 | ✓                 |
| Secure File Transfer              | ✓                 | ✓                 | ✓                 | ✓                 | ✓                 |
| Disclaimers                       | ✓                 | ✓                 | ✓                 | ✓                 | ✓                 |
| User Identity Management          | ✓                 | ✓                 | ✓                 | ✓                 | ✓                 |
| Anti-Virus                        | ✓                 | ✓                 | ✓                 | ✓                 | ✓                 |
| LDAP and Active Directory Support | ✓                 | ✓                 | ✓                 | ✓                 | ✓                 |
| Per User and Group Access Control |                   | ✓                 | ✓                 | ✓                 | ✓                 |
| Ethernet Bypass Hardware          |                   | ✓                 | ✓                 | ✓                 | ✓                 |
| Multiple Domains                  |                   |                   |                   | ✓                 | ✓                 |
| Customizable Branding             |                   |                   |                   | ✓                 | ✓                 |

US 10.0

Specifications subject to change without notice.

\*Capacity depends on environment and selected options.

\*\*Each Ethernet passthrough has two Ethernet jacks.